



**FEBRUARY HISTORY TALK
STEVE SCHULTE - ASPINALL &
THE WILDERNESS ACT
FEB 20TH, 2025 - 5PM**

Join former CMU history professor Steve Schulte as he discusses Wayne Aspinall and his work with The Wilderness Act of 1964.



The talk will begin at 5:00 p.m. on Thursday, February 20th at The Ordinary Fellow Winery. This program is open to the public in a relaxed and comfortable setting for people to learn about Palisade's unique history and enjoy a glass of wine. The tasting room opens at noon, so come early. There is no admission fee, but donations are appreciated.

**MARCH HISTORY TALK
"THIS OLD BARN"
SAVING CROSS ORCHARDS
MARCH 13TH, 2025 - 5PM**



Join Matt Darling, Curator of Cross Orchards Historic Site as he shares "This Old Barn," a documentary about Saving Cross Orchards.

The Cross Orchards at its peak was an agricultural showcase and one of the largest orchards in the State. The three oldest buildings on the property, the barn/packing shed, bunkhouse and manager's house are listed on the National Register of Historic Places.

JANUARY'S HISTORY TALK

January's History Talk was Matt Darling, Curator of Cross Orchards Historic Site, as he shared

stories about the early days of this Historic Site and the fruit industry's challenges in the valley.

Photo: Matt speaking to a large crowd of 45 people at The Ordinary Fellow Winery.



YOUR PURCHASES BENEFIT THE HISTORICAL SOCIETY

The Palisade Historical Society is grateful to participate in the Kroger Community Rewards



Program. If you have a Loyalty Card you can designate the Palisade Historical Society as your charity of choice.



We have a tutorial on our website (HistoricPalisade.org) under the Donate tab, so check it out! Questions? Just ask!

EXPLORE THE PALISADE HISTORY MUSEUM

We are open four days a week: Tuesdays, Thursdays, Fridays, and Saturdays from 10am to 2pm. (Or by appointment!) It's always free admission.

FREE ADMISSION
FREE ADMISSION
FREE ADMISSION

PALISADE
History Museum

3740 G Road
Near the corner of Elberta & Hwy 6 (north frontage road)

Museum Hours:
Tuesday, Thursday, Friday, Saturday
10am - 2pm

HistoricPalisade.org

Stop in and see us! We're at 3740 G Road, near the corner of Elberta and the north frontage road for Highway 6.

FEBRUARY 1905 NEWSPAPER ADS

The Palisade Tribune ads in this issue are from February 1905, which is 120 years ago!



The Palisade Tribune - February 11, 1905

FREE PALISADE TRIBUNE DATABASE



There are 4,154 issues of *The Palisade Tribune* available on the Colorado Historic Newspapers Database, with more on the way. Check out our Newspaper Tab on HistoricPalisade.org for more information!



The Palisade Tribune - February 4, 1905

Editor's Note: C. Bower was "Colonel" Christopher Columbus Bower, a prominent pioneer of Palisade. Museum Volunteer & Palisade Historical Society Member, Dave Cecuga, also leads a Guided Tour around Palisade as Col. Bower. The next time you're in the History Museum or at one of our events, ask us about this! Let us know if you're interested in learning more!

DONATIONS ARE TAX DEDUCTIBLE!

Tax Season is almost upon us. Do you need more deductions this year? Whether you become a member or donate to the Palisade Historical Society, your donation is tax deductible. Our non-profit tax ID is 27-246812.

CONNECT WITH US!

Did you know that The Palisade Historical Society is on [Facebook](#) and [Instagram](#)? We'd love to connect with you!



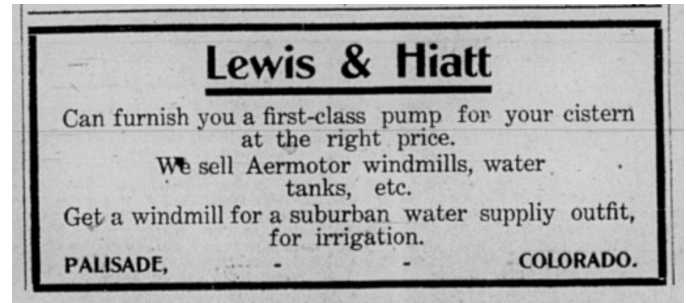
That said, we know that some of you aren't on Social Media, and we don't want you to miss out. Because of that, we will be

posting most of our content on our website [HistoricPalisade.org on the Social Media Tab](#), too! Be sure to check us out in the best place that works for you!

PALISADE HISTORICAL SOCIETY 2024-2025 DIRECTORS

Ralph Branch – branchcolorado@gmail.com
Jaime Cox – jaimejcox@gmail.com
Nancy Eighmy – nanceyeyghmy@gmail.com
Gary Hines – gwhines@msn.com
JoAnn Rasmussen – joannrasm@gmail.com
Priscilla Walker – pbwalker630@acsol.net

CONTACT US:
info@historicpalisade.org
 970-812-3064



The Palisade Tribune - February 11, 1905

FEBRUARY HOURS AT THE PALISADE HISTORY MUSEUM

PALISADE
History Museum
HOURS

FEBRUARY

SUN	MON	TUE	WED	THU	FRI	SAT
26	27	28 10am - 2pm	29	30 10am - 2pm	31 10am - 2pm	1 10am - 2pm
2	3	4 10am - 2pm	5	6 10am - 2pm	7 10am - 2pm	8 10am - 2pm
9	10	11 10am - 2pm	12	13 10am - 2pm	14 10am - 2pm	15 10am - 2pm
16	17	18 10am - 2pm	19	20 10am - 2pm	21 10am - 2pm	22 10am - 2pm
23	24	25 10am - 2pm	26	27 10am - 2pm	28 10am - 2pm	1 10am - 2pm

HISTORICPALISADE.ORG

Here is our schedule for the month of February! We love visitors!

FUTURE HISTORY TALK TOPICS

We are always on the lookout for interesting History Talk ideas. Is there something about Historic Palisade you want to learn? Are you curious about a specific topic? Is there a History Talk we did in the past that you'd like to see again, or maybe you missed it the first time? Let us know! You can email us at info@historicpalisade.org or leave us a message at 970-812-3064.

WHAT DO WE DO AT THE PALISADE HISTORICAL SOCIETY?

The Palisade Historical Society has been collecting, preserving, and communicating the unique history of Palisade, Colorado since we incorporated in 2010.

What does this mean? What is involved?

You'll see in this diagram on the left how everything we do works together to support this cause.

We are incredibly grateful to our Members, Volunteers, and Donors for making this possible.



DONATE YOUR TIME



INTERESTED IN BECOMING A MEMBER OF THE PALISADE HISTORICAL SOCIETY?

We offer various levels of membership: individual, family, business, and yearly, multi-yearly, and lifetime.

Check out our Membership Options at our website HistoricPalisade.org, and/or there is a membership & donation form at the end of this newsletter, too.

THANK YOU!

Business Members



PALISADE

Historical Society

Annual Donation

Town of Palisade

Special Donation

Lions Club International of Palisade
Palisade Sunrise Rotary Club
GJ Rotary Foundation
Rotary District 5470
Rio Grande Federal Credit Union

Lifetime Business

Memberships

Orchard Mesa Irrigation Company
Palisade Pedicab

10-Year Business

Memberships

JR's Carriage Service
Pali-Tours
Palisade Chamber of Commerce

Annual Business

Memberships

Altrusa International of Palisade
Carboy Winery
Dennis Cole - Cole Orchards
Grand Valley Bank
HQ Investments
Kokopelli Farm Market (10+ years!)
Palisade Basecamp RV Resort
Wine Country Ceremonies

Heritage Donors to the Museum

Fruit and Wine Real Estate
Clark Family Orchards
Kokopelli Farm Market

Our Publications Available Here

Harlow Lifestyle & Gift - Palisade
Lithic Bookstore & Gallery - Fruita
Museum of Western Colorado Gift Shop - GJ
Out West Books - GJ
Palisade Basecamp RV Resort
Palisade Chamber of Commerce


**INTERESTED IN BECOMING A BUSINESS MEMBER?
CONTACT US TODAY!**

Become a Part of History - Donate to the Palisade Historical Society.

The Palisade Historical Society relies on donations to facilitate projects that enhance our community by documenting local history and promoting our heritage. You can join us with your support in a targeted way that interests you most, or just make a general donation. Make a donation for any or all of the following categories:

- Become a **Member**
- Contribute to **The Palisade Tribune Digitization Fund**
- Donate to the **Palisade History Museum**
- Make a **General Donation**

<p style="text-align: center;">Membership Options</p> <p>Annual Memberships Individual \$25 <input type="checkbox"/> Family \$50 <input type="checkbox"/> Business \$100 <input type="checkbox"/> Patron \$500 <input type="checkbox"/></p> <p>Extended Memberships 10-year (Family or Individual) \$200 <input type="checkbox"/> Lifetime (Family or Individual) \$400 <input type="checkbox"/></p>	 Memberships
---	---

<p style="text-align: center;">Palisade Tribune Digitization Fund</p> <p>We have raised funds to digitize 4,154 issues of The Palisade Tribune for the Colorado Historic Newspapers Collection database website. Please help us get more issues online for browsing and searching from anywhere!</p> <p>\$1,000 <input type="checkbox"/> \$100 <input type="checkbox"/> Other <input type="checkbox"/> \$ _____</p>	 Donations
<p style="text-align: center;">Palisade History Museum</p> <p>Please help us at any level.</p> <p>\$1,000 <input type="checkbox"/> \$500 <input type="checkbox"/> \$100 <input type="checkbox"/> Other <input type="checkbox"/> \$ _____</p> <p>\$2,500 (receive a "Proud Supporter" sign) <input type="checkbox"/></p> <p>\$5,000 (advertise in the Museum for your business) <input type="checkbox"/></p>	
<p style="text-align: center;">General Donation</p> <p>Any amount is appreciated! <input type="checkbox"/> \$ _____</p>	

For credit card payments, use the QR codes above, or call 970-812-3064.
 For checks or money orders payable to Palisade Historical Society, mail them with your contact information to: **Palisade Historical Society, PO Box 631, Palisade, CO 81526**

Name

Address

City | State | Zip

Phone

Email (for newsletters)

The Palisade Historical Society is a 501(c)(3) organization. Donations are tax-deductible.
 Our non-profit tax ID number is 27-246812.