

**JANUARY HISTORY TALK
EARLY DAYS OF
CROSS ORCHARDS
JAN 16TH, 2025 - 5PM**

Join Matt Darling, Curator of Cross Orchards Historic Site, as he shares stories about the early days of this Historic Site and the fruit industry's challenges in the valley.



The Cross Orchards at its peak was an agricultural showcase and one of the largest orchards in the State. The three oldest buildings on the property, the barn/packing shed, bunkhouse and manager's house are listed on the National Register of Historic Places.

The talk will begin at 5:00 p.m. on Thursday, January 16th at The Ordinary Fellow Winery. This program is open to the public in a relaxed and comfortable setting for people to learn about Palisade's unique history and enjoy a glass of wine. The tasting room opens at noon, so come early. There is no admission fee, but donations are appreciated.

**FEBRUARY HISTORY TALK
STEVE SCHULTE - ASPINALL & THE
WILDERNESS ACT
FEB 20TH, 2025 - 5PM**

Join former CMU history professor Steve Schulte as he discusses Wayne Aspinall and his work with The Wilderness Act of 1964.

Photo: In the Rose Garden, September 3, 1964. President Lyndon B. Johnson has just signed the Wilderness Act.



Congressman Wayne N. Aspinall grew up in Palisade and was a 12-term Congressional Representative from the Western Slope's Third Congressional District.

DECEMBER'S HISTORY TALK

December's History Talk was "*Promise*, by Joe Zeni." Joe is a local author who discussed



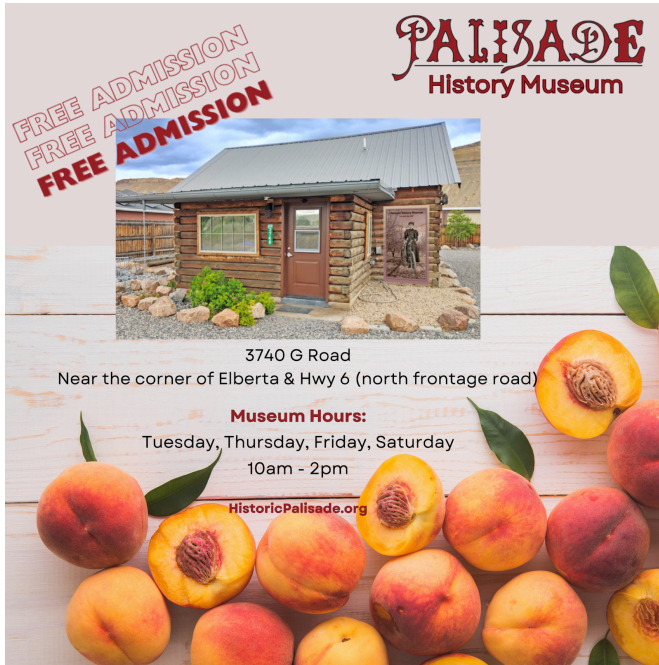
his new book, *Promise*, which is the story of Harold Aupperle and the Grand Valley at the turn

of the 20th Century and World War I where he served with the Red Cross. **Photo: Joe speaking to a full house at The Ordinary Fellow**

EXPLORE THE PALISADE HISTORY MUSEUM

The Palisade History Museum will be open January 2nd, 3rd, and 4th, to ring in the New Year!

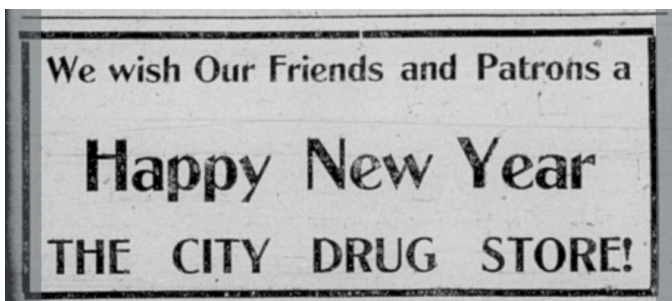
We are open four days a week: Tuesdays, Thursdays, Fridays, and Saturdays from 10am to 2pm. (Or by appointment!) It's always free admission.



Stop in and see us! We're at 3740 G Road, near the corner of Elberta and the north frontage road for Highway 6.

JANUARY 1904 NEWSPAPER ADS

The Palisade Tribune ads in this issue are from January 1904, which is 121 years ago!



The Palisade Tribune - January 2, 1904

PRIVATE TOURS OF THE HISTORY MUSEUM - BY APPOINTMENT

💡 Did you know? 💡 We can host your group for a private tour of the Palisade History Museum! Contact us for details at info@historicpalisade.org or 970-812-3064.



Priscilla Walker (Founding Chair) & JoAnn Rasmussen (Chair) had a fantastic time during the Thanksgiving Break with a local family & their holiday visitors!

Also featured? The youngest researcher ever!

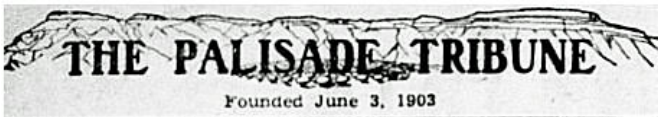
MESA COUNTY LIBRARY DISTRICT ADULT LEARNING CENTER CLASS TOURED



Andres Arredondo, instructor at Mesa County Libraries Adult Learning Center, brought a class to visit the History Museum in December. From left to right, Gabriella, Andres, Mayre, Anna, and Ericka who enjoyed the historic holiday decorations.



FREE PALISADE TRIBUNE DATABASE



There are 4,154 issues of *The Palisade Tribune* available on the Colorado Historic Newspapers Database, with more on the way. Check out our Newspaper Tab on HistoricPalisade.org for more information!



The Palisade Tribune - January 2, 1904

CONNECT WITH US!

Did you know that The Palisade Historical Society is on [Facebook](https://www.facebook.com/PalisadeHistoricalSociety) and [Instagram](https://www.instagram.com/HistoricPalisadeCO)? We'd love to connect with you!



That said, we know that some of you aren't on Social Media, and we don't want you to miss out. Because of that, we will be

posting most of our content on our website HistoricPalisade.org on the [Social Media Tab](#), too! Be sure to check us out in the best place that works for you!

BIRTHDAY PRESENT TOUR FOR ROBBIE CAMP



For her son Robbie's birthday, History Museum Host Joan Forrey, center, also invited friends to downtown Palisade for Priscilla Walker's "Fire and Brimstone" guided walking tour. Afterwards, before going to lunch at Slice 'o Life Bakery, they posed for a photo. (l to r) Dallas, Robbie, Jackie (holding Jasper, the dog) Joan, Ruby and Steve.

PALISADE PARADE OF LIGHTS



To kick off Palisade's Olde Fashioned Christmas Celebration on December 6th, the Palisade Historical Society participated in the Parade of

Lights! Chair JoAnn & volunteer Claire Elise Rasmussen (pictured above) led the way in the golf cart. Special thanks to director Ralph Branch for providing the wheels!



Tom Schaffer drove his 1923 Star Open Delivery Truck and posed with Craig Clarke and Joe Higginbotham of the Western Colorado Shrine Club (pictured above) while we were lining up. The El Jebel Shriners' parade entry was a 1929 Model AA Ford.

Founding Chair Priscilla Walker drove the 1930 Model A Ford, with Santa and Mrs. Claus, portrayed by Pete and



Wanda Robinson, Palisade Historical Society members, in the rumble seat! Volunteer Dave Cecuga danced along the parade route. (Pictured left to right: Claire Elise, Santa & Mrs. Claus, Dave C., Priscilla, and JoAnn.)

PALISADE FIRST BAPTIST CHURCH IS NOW HARVEST CHAPEL

The leadership of the historic Palisade First Baptist Church has rebranded it to Harvest Chapel, which they believe wonderfully reflects the personality of our community. The new name recognizes Palisade's agricultural legacy that our fruit growers can relate to and seek to make a difference in the sphere of influence and welcome everyone to join in a new

season for the church family life.



The Victorian Style building was

constructed in 1902 and later moved to its current location at 5th and Main Street when additions and a belfry were added to the smaller, original building. Thankful for the past affiliation and previous name, First Baptist Church has been part of the community and abroad since 1895 when 11 charter members organized the Church.

PALISADE HISTORICAL SOCIETY 2024-2025 DIRECTORS

Ralph Branch – branchcolorado@gmail.com
 Jaime Cox – jaimejcox@gmail.com
 Nancy Eighmy – nanceyeyghmy@gmail.com
 Gary Hines – gwhines@msn.com
 JoAnn Rasmussen – joannrasm@gmail.com
 Priscilla Walker – pbwalker630@acsol.net

CONTACT US:

info@historicpalisade.org
 970-812-3064

WE WISH YOU THE BEST IN 2025!

Happy New Year!

THANK YOU!

Business Members



PALISADE

Historical Society

Annual Donation

Town of Palisade

Special Donation

Lions Club International of Palisade
Palisade Sunrise Rotary Club
GJ Rotary Foundation
Rotary District 5470
Rio Grande Federal Credit Union

Lifetime Business

Memberships

Orchard Mesa Irrigation Company
Palisade Pedicab

10-Year Business

Memberships

JR's Carriage Service
Pali-Tours
Palisade Chamber of Commerce

Annual Business

Memberships

Altrusa International of Palisade
Carboy Winery
Dennis Cole - Cole Orchards
Grand Valley Bank
HQ Investments
Kokopelli Farm Market (10+ years!)
Palisade Basecamp RV Resort
Wine Country Ceremonies

Heritage Donors to the Museum

Fruit and Wine Real Estate
Clark Family Orchards
Kokopelli Farm Market

Our Publications Available Here

Harlow Lifestyle & Gift - Palisade
Lithic Bookstore & Gallery - Fruita
Museum of Western Colorado Gift Shop - GJ
Out West Books - GJ
Palisade Basecamp RV Resort
Palisade Chamber of Commerce


**INTERESTED IN BECOMING A BUSINESS MEMBER?
CONTACT US TODAY!**

Become a Part of History - Donate to the Palisade Historical Society.

The Palisade Historical Society relies on donations to facilitate projects that enhance our community by documenting local history and promoting our heritage. You can join us with your support in a targeted way that interests you most, or just make a general donation. Make a donation for any or all of the following categories:

- Become a **Member**
- Contribute to **The Palisade Tribune Digitization Fund**
- Donate to the **Palisade History Museum**
- Make a **General Donation**

<p style="text-align: center;">Membership Options</p> <p>Annual Memberships Individual \$25 <input type="checkbox"/> Family \$50 <input type="checkbox"/> Business \$100 <input type="checkbox"/> Patron \$500 <input type="checkbox"/></p> <p>Extended Memberships 10-year (Family or Individual) \$200 <input type="checkbox"/> Lifetime (Family or Individual) \$400 <input type="checkbox"/></p>	 Memberships
---	---

<p style="text-align: center;">Palisade Tribune Digitization Fund</p> <p>We have raised funds to digitize 4,154 issues of The Palisade Tribune for the Colorado Historic Newspapers Collection database website. Please help us get more issues online for browsing and searching from anywhere!</p> <p>\$1,000 <input type="checkbox"/> \$100 <input type="checkbox"/> Other <input type="checkbox"/> \$ _____</p>	 Donations
<p style="text-align: center;">Palisade History Museum</p> <p>Please help us at any level.</p> <p>\$1,000 <input type="checkbox"/> \$500 <input type="checkbox"/> \$100 <input type="checkbox"/> Other <input type="checkbox"/> \$ _____</p> <p>\$2,500 (receive a "Proud Supporter" sign) <input type="checkbox"/></p> <p>\$5,000 (advertise in the Museum for your business) <input type="checkbox"/></p>	
<p style="text-align: center;">General Donation</p> <p>Any amount is appreciated! <input type="checkbox"/> \$ _____</p>	

For credit card payments, use the QR codes above, or call 970-812-3064.
 For checks or money orders payable to Palisade Historical Society, mail them with your contact information to: **Palisade Historical Society, PO Box 631, Palisade, CO 81526**

Name

Address

City | State | Zip

Phone

Email (for newsletters)

The Palisade Historical Society is a 501(c)(3) organization. Donations are tax-deductible.
 Our non-profit tax ID number is 27-246812.