

PALISADE Historical Society

OCTOBER'S HISTORY TALK AT THE ORDINARY FELLOW WINERY "History Talk & Creative Writing Open Mic" OCT. 24 - 6PM

Join us on Thursday, October 24th at 6pm at The Ordinary Fellow Winery here in Palisade for a History Talk Open Mic full of Palisade Poetry & Creative Writing! This will be a



special creative writing open mic event for attendees to share their favorite poems or stories on the history of Palisade. Come 15 minutes early to sign up for the open mic and share your own poem or story inspired by the history of Palisade!

Readers will have up to 3 minutes to share their work. Don't feel like sharing? Join us in the audience!

(Continued...)

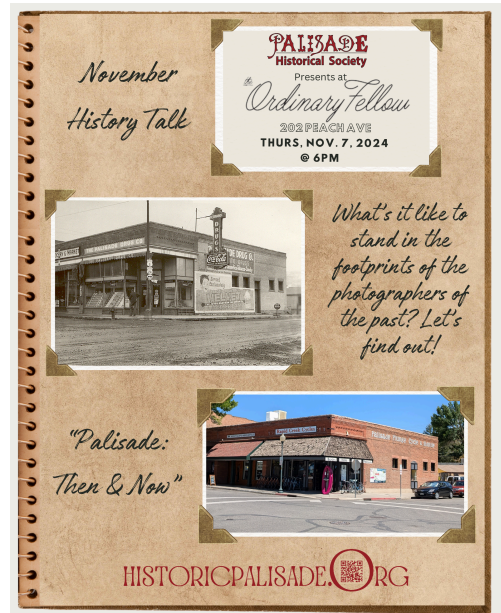
October 2024

~*~

These History Talks are open to the public at The Ordinary Fellow Winery, 202 Peach Avenue. It's a relaxed & comfortable setting to learn about Palisade's unique history.

NOVEMBER HISTORY TALK "Palisade: Then & Now" NOV. 7, 2024 - 6PM

SAVE THE DATE! Join JoAnn Rasmussen, Chair of the Palisade Historical Society, as she shares vintage photos of Palisade with their corresponding photos of today!



LAST MONTH'S HISTORY TALK

GVIC Asst. Superintendent Charlie Guenther



presented the history the Grand Valley Canal, which was built in 1883 and has the oldest water rights on what became the Colorado River.

Photo: Crowd

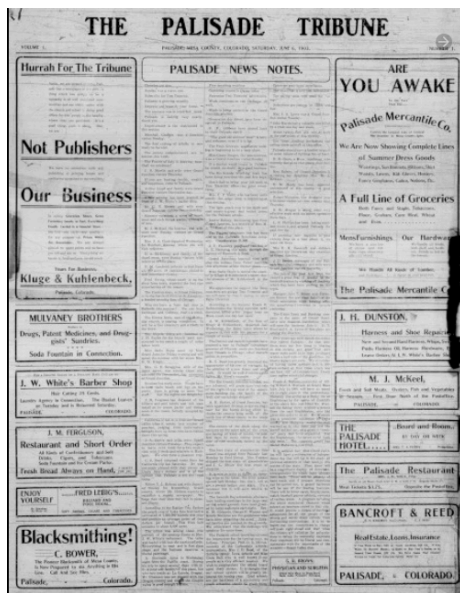
enjoying Charlie's Grand Valley Irrigation Company presentation.

MORE ISSUES AVAILABLE OF THE PALISADE TRIBUNE!



Almost 4,000 issues of *The Palisade Tribune* (3,948 issues, to be exact!) are now on the Colorado Historic Newspapers Collection Website!

One of the most important on-going projects of the Palisade Historical Society is preserving archival copies of *The Palisade Tribune* and making them



available online for searching and browsing. *The Palisade Tribune* was Palisade's newspaper of record from June 1903 until it closed in March 2014. Thanks to generous donors and support from the Colorado Historic Newspapers Collection, 3,948 issues – beginning with the first edition June 6, 1903 (image pictured above), and all issues in our collection through December 16, 1982 – are now available!

We have a Historic Newspaper tab with a direct link to searching the database. Check out our Historic Newspaper Tab on HistoricPalisade.org for more information!

GRAND MESA PEACHES VISIT HISTORIC CRISSEY HOUSE

On Wednesday, September 18th, the Grand Mesa Peaches Chapter of the Questers toured the 1908 Historic Crissey House with JoAnn Rasmussen, Chair of the Palisade Historical Society and co-owner of the historic property. The Questers organization has been around since 1944 and focuses on preservation, restoration, and education.



Allie Thompson Stewart, Cherie Pedersen, Ann Huber, Jane Thompson, and Chris Church



JoAnn Rasmussen

OCTOBER 1904 NEWSPAPER ADS

The Palisade Tribune ads in this issue are from October 1904. They are 120 years old!



The Palisade Tribune - October 1, 1904

EXPLORE THE PALISADE HISTORY MUSEUM

The Palisade History Museum is open four days a week: Tuesdays, Thursdays, Fridays, and Saturdays from 10am to 2pm, or by appointment. Stop in and see us!



PRE-ORDER THE 2025 THEN & NOW CALENDAR!

Our 2025 Calendar is available for pre-order! It is a perfect Holiday Gift for friends, relatives, teachers, neighbors & more! All donations support the Palisade Historical Society. Contact us & order yours today!



Introducing the 2025 PALISADE THEN & NOW Calendar

Suggested Donation:
1 Calendar: \$30
2+ Calendars: \$25 each

Palisade Historical Society Members Special Pricing
Suggested Donation: \$20 each

Cash, credit card, or checks accepted.



FOR MORE INFO: CALL/TEXT 970-812-3064
OR EMAIL INFO@HISTORICPALISADE.ORG OR VISIT

HISTORICPALISADE.ORG

Shipping cost: \$11 shipping for up to 4 calendars to a single address.
Cost for shipping 5+ calendars will be calculated as needed.
Free local pickup at the Palisade History Museum also available.

HISTORIC PALISADE WITH PALI-TOURS

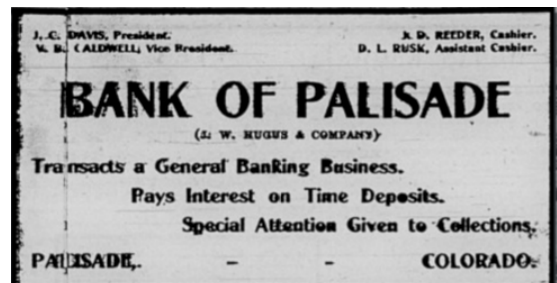
On September 7th, the Palisade Historical Society paired up with one of our Business Members, Pali-Tours, for a fun Historic Palisade Tour Adventure.

We all piled in Dave Smith's Pali-Tours 1974 Pinzgauer, while Priscilla Walker narrated the history of various sites in the valley and around Palisade, and JoAnn Rasmussen shared the corresponding historic photos.

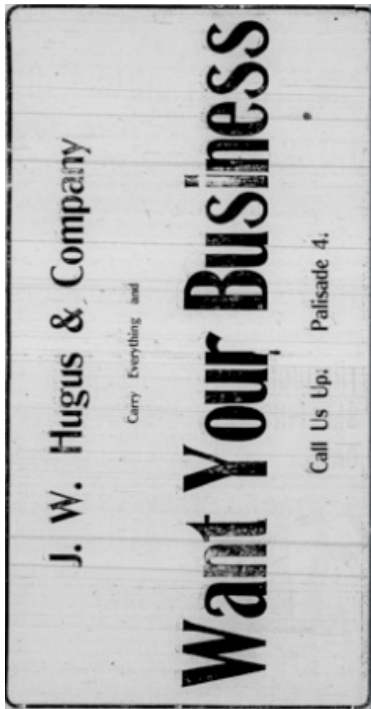


JoAnn Rasmussen, Dave Smith, Priscilla Walker, and Connie & Paul Biehle (with Callie, the dog) pose mid-tour at Clark's Orchard.

It was a beautiful day to show off the sites of Palisade to our visitors, while we shared the history of coal mining, irrigation, orchards, vineyards, and more!



The Palisade Tribune - October 22, 1904



*The Palisade Tribune - October 15, 1904
Note: This large advertisement was on the front page and really was on its side like this!*

HAVE YOU RENEWED YOUR MEMBERSHIP?

We offer Individual, Family, and Business Memberships of various lengths: Yearly, Multi-yearly, and Lifetime. As a 501(c)(3) non-profit organization, the Palisade Historical Society relies on donations from generous people like you. Not sure if or when yours expires? Just ask & we'll let you know!

In honor of Palisade's 120th Birthday, we're trying to reach a goal of 120 members this year! Not a member? Please join us. We are getting closer!

Check out our Membership Options at HistoricPalisade.org, and/or there is a Membership & Donation form at the end of this newsletter, too.

THANK YOU TO OUR CURRENT MEMBERS!

The Palisade Historical Society & Palisade History Museum exist because of your generosity. We couldn't do what we do without supporters like you!

PALISADE HISTORICAL SOCIETY 2024-2025 DIRECTORS

Ralph Branch – branchcolorado@gmail.com
Joe Burtard – jrcarriage@gmail.com
Jaime Cox – jaimejcox@gmail.com
Nancy Eighmy – eighmyn@bresnan.net
Gary Hines – gwhines@msn.com
JoAnn Rasmussen – joannrasm@gmail.com
Priscilla Walker – pbwalker630@acsol.net

CONTACT US:

970-812-3064
info@historicpalisade.org

YOUR PURCHASES BENEFIT THE HISTORICAL SOCIETY

The Palisade Historical Society is grateful to participate in the Kroger Community Rewards



Program. If you have a Loyalty Card you can designate the Palisade Historical Society as your charity of choice.



We have a tutorial on our website (HistoricPalisade.org) under the Donate tab, so check it out! Questions? Just ask!

THANK YOU!

Business Members



PALISADE

Historical Society

Annual Donation Town of Palisade

Special Donation Lions Club International of Palisade

Lifetime Business Memberships Orchard Mesa Irrigation Company Palisade Pedicab

10-Year Business Memberships JR's Carriage Service Pali-Tours Palisade Chamber of Commerce

Annual Business Memberships Altrusa International of Palisade Dennis Cole - Cole Orchards Grand Valley Bank HQ Investments Kokopelli Farm Market (10+ years!) Palisade Basecamp RV Resort Wine Country Ceremonies

Heritage Donors to the Museum Fruit and Wine Real Estate Clark Family Orchards Kokopelli Farm Market

Our Publications Available Here Harlow Lifestyle & Gift - Palisade Lithic Bookstore & Gallery - Fruita Museum of Western Colorado Gift Shop - GJ Out West Books - GJ Palisade Basecamp RV Resort Palisade Chamber of Commerce


**INTERESTED IN BECOMING A BUSINESS MEMBER?
CONTACT US TODAY!**

Become a Part of History - Donate to the Palisade Historical Society.

The Palisade Historical Society relies on donations to facilitate projects that enhance our community by documenting local history and promoting our heritage. You can join us with your support in a targeted way that interests you most, or just make a general donation. Make a donation for any or all of the following categories:

- Become a **Member**
- Contribute to **The Palisade Tribune Digitization Fund**
- Donate to the **Palisade History Museum**
- Make a **General Donation**

<p style="text-align: center;">Membership Options</p> <p>Annual Memberships Individual \$25 <input type="checkbox"/> Family \$50 <input type="checkbox"/> Business \$100 <input type="checkbox"/> Patron \$500 <input type="checkbox"/></p> <p>Extended Memberships 10-year (Family or Individual) \$200 <input type="checkbox"/> Lifetime (Family or Individual) \$400 <input type="checkbox"/></p>	 Memberships
-----------------------------------------------------------------------------------------------------------------------------------------------------------------------------------------------------------------------------------------------------------------------------------------------------------------------------------------------------------------------------------------------------------------------------------------------------------------	-----------------------------------------------------------------------------------------------------------

<p style="text-align: center;">Palisade Tribune Digitization Fund</p> <p>We have raised funds to digitize 3,948 issues of The Palisade Tribune for the Colorado Historic Newspaper Collection database website. Please help us get more issues online for browsing and searching from anywhere!</p> <p>\$1,000 <input type="checkbox"/> \$100 <input type="checkbox"/> Other <input type="checkbox"/> \$ _____</p>	 Donations
<p style="text-align: center;">Palisade History Museum</p> <p>Please help us at any level.</p> <p>\$1,000 <input type="checkbox"/> \$500 <input type="checkbox"/> \$100 <input type="checkbox"/> Other <input type="checkbox"/> \$ _____</p> <p>\$2,500 (receive a "Proud Supporter" sign) <input type="checkbox"/></p> <p>\$5,000 (advertise in the Museum for your business) <input type="checkbox"/></p>	
<p style="text-align: center;">General Donation</p> <p>Any amount is appreciated! <input type="checkbox"/> \$ _____</p>	

For credit card payments, use the QR codes above, or call 970-812-3064.
 For checks or money orders payable to Palisade Historical Society, mail them with your contact information to: **Palisade Historical Society, PO Box 631, Palisade, CO 81526**

Name

Address

City | State | Zip

Phone

Email (for newsletters)

The Palisade Historical Society is a 501(c)(3) organization. Donations are tax-deductible.
 Our non-profit tax ID number is 27-246812.