

PALISADE Historical Society

PEACH QUILT FEATURED AT THE BLUE PIG



In 2002, at age 80, Colorado Native Flora Anderson created a Queen-sized quilt with 90 squares, each depicting a different peach variety.

Photo: Flora Hollins Anderson's 1939 Merino High School graduation photo.

She worked tirelessly with Palisade peach growers to research peaches and then hand painted all 90 squares accurately. The Standard Elberta variety was pale yellow when ripe, and the Blake variety was a much more customer-appealing red. The longtime favorite Cresthaven variety - as well as more recent PF varieties - are also featured in the art quilt.

Flora passed away peacefully at age 98 in 2020. Her daughters, Lori Bennett and Robin McCain, donated this incredibly interesting quilt to the Palisade Historical Society, as their mother's wish was it would be given to a museum.

The walls at the Blue Pig Art Gallery are tall enough to fully display the quilt, and owners Heather and Chuck Nowak agreed to have it securely displayed in the main gallery during Palisade's peach harvest. A photo and details of the quilt are also on display at the Palisade History Museum.

Be sure to stop by The Blue Pig this month to see it in person!

August 2024



This Peach Quilt is currently at the Blue Pig Gallery on loan from the Palisade Historical Society. See it at 101 West Third Street in Downtown Palisade.



BLUE PIG GALLERY

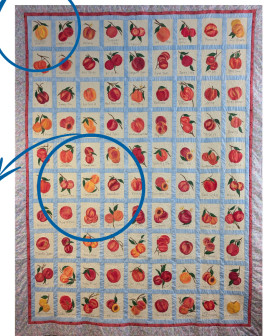
Open Monday Mornings
10am - 5:30pm Tuesday & Wednesday
10am - 9pm Thursdays-Saturdays
10am - 5pm Sunday
thebluepiggallery.com



The detail work is stunning!



90 different peach varieties are hand-painted on this Queen Size Quilt.



PALISADE
Historical Society

LOCAL NEWS COVERAGE

KREX TV and *The Daily Sentinel* came to the Blue Pig to do feature stories on the Peach Quilt! Check out HistoricPalisade.org for the links!



AUGUST MEANS PEACHES!

The Palisade Historical Society will be presenting the History of Peaches on August 16th at 4pm at Peach Fest! Check out the Schedule of Events at:

<https://palisadecoc.com/events/palisadepeachfest/>



THE ORDINARY FELLOW WINERY HISTORY TALK

Charlie Guenther - "Grand Valley Irrigation District"

THURSDAY, SEPT. 26th - 6pm

GVID Asst. Superintendent Charlie Guenther will present a History Talk on the Grand Valley Irrigation District.

These History Talks are open to the public at The Ordinary Fellow Winery, 202 Peach Avenue. It's a relaxed & comfortable setting to learn about Palisade's unique history and enjoy a glass of wine. The tasting room opens at noon. Be sure to save the date!

LAST MONTH'S HISTORY TALK AT THE ORDINARY FELLOW WINERY

"History of the Palisade Insectary" by Dan Bean

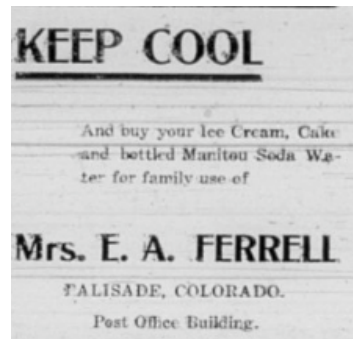
The July History Talk was presented by Dan Bean, Director of the Colorado Department of Agriculture's Palisade Insectary. He explained how Palisade plays a key role in pest and weed management in Colorado and the United States. The history of the Palisade Insectary began by creating a biocontrol for the Oriental Fruit Moth which was destroying Palisade's peach industry in the 1940s. He discussed past successes, biocontrol in development, and the future of biocontrol.



The audience learns about the Palisade Insectary's work in biocontrols from Dan Bean at the history talk held at The Ordinary Fellow Winery in July.

AUGUST 1904 NEWSPAPER ADS

Throughout this Newsletter, you will see ads from past issues of *The Palisade Tribune*.



The ads in this issue are from August 1904. It's a small glimpse of life in Palisade from 120 years ago!

To browse topics & search for more history, check out

[The Historic Newspaper tab at HistoricPalisade.org!](http://HistoricPalisade.org)

FRUITA COMMUNITY CENTER JOINED US FOR A TOWN CENTER TOUR

A group from the Fruta Community Center came for our Town Center Guided Walking Tour led by JoAnn Rasmussen with assistance of Priscilla Walker.



The group poses for a photo in front of Palisade artist Lyle Nichols' "Harley" sculpture in the Town Plaza. The group enjoyed seeing historic photos in contrast with how downtown Palisade looks now.

In August, the group from Fruta will be joining Dave Cecuga as he leads the guided walking tour "An Hour with Colonel Bower" in the persona of Palisade pioneer, Colonel Christopher Columbus Bower.

HELP US REACH OUR MEMBERSHIP GOAL!

In honor of Palisade's 120th Birthday, we're trying to reach a goal of 120 members this year! Please join us. We are getting closer! Check out our Membership Options at our website HistoricPalisade.org and there is a membership & donation form at the end of this newsletter, too.

THE 4th of JULY PARADE

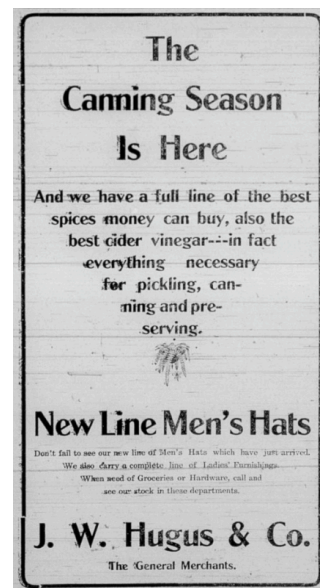
Palisade Historical Society volunteers took part in the Palisade 4th of July Parade! A fun time was had by all!

(continued)

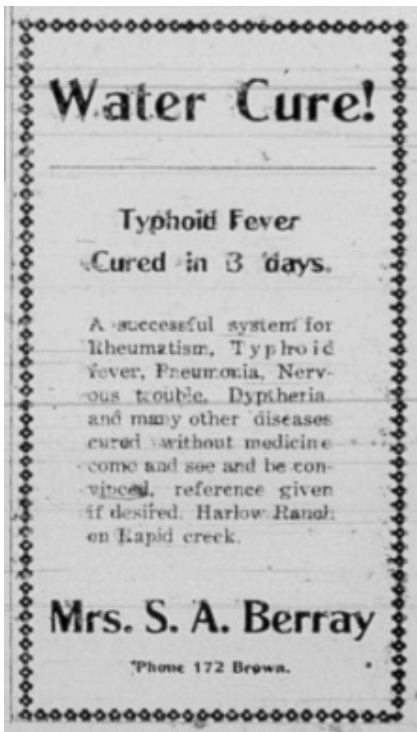
The Historical Society was in the July 4th Parade



Clockwise starting in the top left: Dave Cecuga, Wanda Robinson, Claire Elise & JoAnn Rasmussen, and Priscilla & Bruce Walker pose in front of Freddie, the 1930 Model A Ford. Pete & Wanda Robinson ride in the Model A's rumble seat. Tom Schaffer and Lisa Marye pose in front of their 1923 Star Open Delivery truck. Bottom row left: JoAnn & Claire Elise carry the Historical Society banner, leading the 1923 & 1930 vehicles.



The Palisade Tribune - August 13, 1904



The Palisade Tribune - August 13, 1904

YOUR PURCHASES BENEFIT THE HISTORICAL SOCIETY

The Palisade Historical Society is grateful to participate in the Kroger Community Rewards



Program. If you have a Loyalty Card you can designate the Palisade Historical Society as your charity of choice.



It's free and a great way to support the Palisade Historical Society. You do not have to be a member of the Palisade Historical Society, and you don't have to live in the area to participate!

We have a tutorial on our website (HistoricPalisade.org) under the Donate tab, so check it out! Questions? Just ask!

PALISADE HISTORICAL SOCIETY 2024-2025 DIRECTORS

- Ralph Branch – branchcolorado@gmail.com
- Joe Burtard – jrcarriage@gmail.com
- Jaime Cox – jaimejcox@gmail.com
- Nancy Eighmy – eighmyn@bresnan.net
- Gary Hines – gwhines@msn.com
- JoAnn Rasmussen – joannrasm@gmail.com
- Priscilla Walker – pbwalker630@acsol.net

CONTACT US:

970-812-3064
info@historicpalisade.org



STOP BY IN PERSON!

The Palisade History Museum is open four days a week: Tuesdays, Thursdays, Fridays, and Saturdays from 10am to 2pm. Stop in and see us!

UPDATED WEBSITE

The Palisade Historical Society has been revamping the HistoricPalisade.org website! It is a fun, one-stop-shop for us. You can donate, sign up for a membership, read our Newsletters, use a link to the online *Palisade Tribunes* and more! Be sure to check it out!



The Palisade Tribune - August 13, 1904

THANK YOU!

Business Members



PALISADE **Historical Society**

Annual Donation Town of Palisade

Lifetime Business **Memberships**

Orchard Mesa Irrigation District
Palisade Pedicab

10-Year Business **Memberships**

JR's Carriage Service
Pali Tours
Palisade Chamber of Commerce

Annual Business **Memberships**

Dennis Cole - Cole Orchards
Grand Valley Bank
HQ Investments
Kokopelli Farm Market (10+ years!)
Wine Country Ceremonies

Heritage Donors **to the Museum**

Fruit and Wine Real Estate
Clark Family Orchards
Kokopelli Farm Market

Our Publications Available Here

Harlow Lifestyle & Gift - Palisade
Lithic Bookstore & Gallery - Fruita
Museum of Western Colorado Gift Shop - GJ
Out West Books - GJ
Palisade Basecamp RV Resort
Palisade Chamber of Commerce


INTERESTED IN BECOMING A BUSINESS MEMBER?
CONTACT US TODAY!

Become a Part of History - Donate to the Palisade Historical Society.

The Palisade Historical Society relies on donations to facilitate projects that enhance our community by documenting local history and promoting our heritage. You can join us with your support in a targeted way that interests you most, or just make a general donation. Make a donation for any or all of the following categories:

- Become a **Member**
- Contribute to **The Palisade Tribune Digitization Fund**
- Donate to the **Palisade History Museum**
- Make a **General Donation**

<p style="text-align: center;">Membership Options</p> <p>Annual Memberships Individual \$25 <input type="checkbox"/> Family \$50 <input type="checkbox"/> Business \$100 <input type="checkbox"/> Patron \$500 <input type="checkbox"/></p> <p>Extended Memberships 10-year (Family or Individual) \$200 <input type="checkbox"/> Lifetime (Family or Individual) \$400 <input type="checkbox"/></p>	 Memberships
---	---

<p style="text-align: center;">Palisade Tribune Digitization Fund</p> <p>We have raised funds to digitize 3,753 issues of The Palisade Tribune for the Colorado Historic Newspaper Collection database website. Please help us get more issues online for browsing and searching from anywhere!</p> <p>\$1,000 <input type="checkbox"/> \$100 <input type="checkbox"/> Other <input type="checkbox"/> \$ _____</p>	 Donations
<p style="text-align: center;">Palisade History Museum</p> <p>Please help us at any level.</p> <p>\$1,000 <input type="checkbox"/> \$500 <input type="checkbox"/> \$100 <input type="checkbox"/> Other <input type="checkbox"/> \$ _____</p> <p>\$2,500 (receive a "Proud Supporter" sign) <input type="checkbox"/></p> <p>\$5,000 (advertise in the Museum for your business) <input type="checkbox"/></p>	
<p style="text-align: center;">General Donation</p> <p>Any amount is appreciated! <input type="checkbox"/> \$ _____</p>	

For credit card payments, use the QR codes above, or call 970-812-3064.
 For checks or money orders payable to Palisade Historical Society, mail them with your contact information to: **Palisade Historical Society, PO Box 631, Palisade, CO 81526**

Name

Address

City | State | Zip

Phone

Email (for newsletters)

The Palisade Historical Society is a 501(c)(3) organization. Donations are tax-deductible.
 Our non-profit tax ID number is 27-246812.